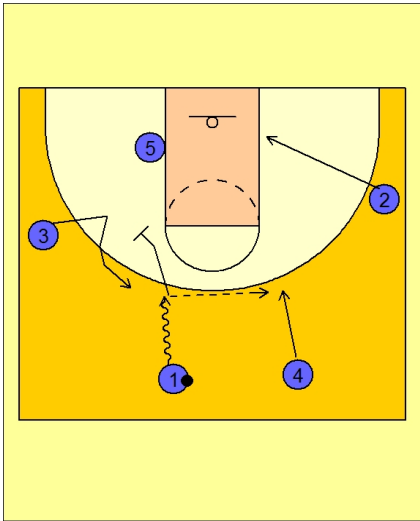




Early offense (6)



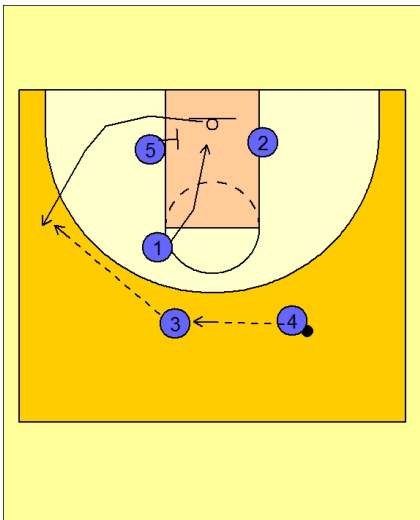
Duke Early Offense

#1 drives the ball up the floor.

#4 trails the play next to #1.

#1 reverses the ball to #4 on top and then screens away for #3.

#2 cuts down to the right low block.

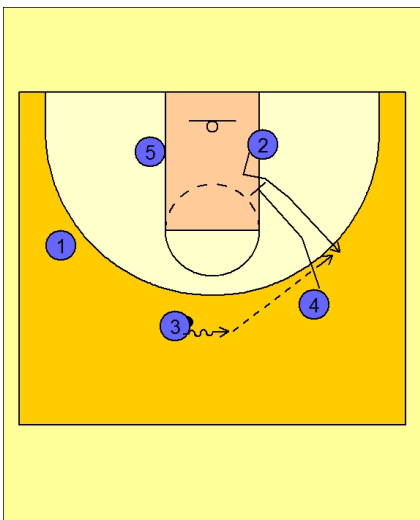


Duke Early Offense

#1 passed to #4 and then cuts under the basket.

At the same time, #4 is reversing the ball across the top to #3.

#3 looks to hit #1 coming off the screen from #5 if he is open.



Duke Early Offense

If #1 is not open, #4 is screening down in the lane for #2.

#3 centers the ball on the dribble and looks for #2 for the open jumper.



Duke Early Offense

They are now in a 3 out 2 in alignment ready to begin their motion offense or set play.

